

IF YOU'RE A SECONDARY SCHOOL / ITE / POLYTECHNIC STUDENT



Energy-Industry Scholarship (EIS)
The EIS is open to all Singapore Citizens and Permanent Residents who are pursuing relevant engineering courses at the ITE and polytechnics. It covers tuition fees, a one-time allowance and a monthly living allowance.

Sponsoring Organisations:



IF YOU'RE A UNIVERSITY STUDENT



Singapore-Industry Scholarship (SgIS)

The SgIS for the Power sector is open to Singapore Citizens who are pursuing relevant engineering courses at local and overseas universities.

The scholarship covers tuition fees, provides an annual living allowance, a hostel allowance, and an overseas exchange allowance.

Sponsoring Organisations:



IF YOU'RE AN EARLY TO MID-CAREER PROFESSIONAL



Earn and Learn Programme (ELP)

Those who successfully complete the ELP programme will receive industry-recognised qualifications and a sign-on incentive.



Courses

- Advanced Diploma in Power Engineering
- Specialist Diploma in Electrical Design & Operations

IF YOU'RE AN EARLY TO MID-CAREER PROFESSIONAL



Professional Conversion Programme

Successful candidates will be hired by one of the participating companies before commencing a combination of facilitated classroom learning and customised on-the-job training.

IF YOU'RE AN EARLY TO MID-CAREER PROFESSIONAL



Study Award for the Power Sector

The Study Award supports Singapore Citizens with two years of working experience in the Power sector or related sectors to pursue approved engineering courses. Successful applicants will receive \$5,000.

MULTIPLE PATHWAYS TO EXCEL

You can be part of Singapore's new energy story. We need innovators, dreamers and doers. Most importantly, you must find meaning in keeping the lights on and gas flowing for Singapore. To help you onboard and deepen your skills, the Power Sector offers you multiple pathways.

Structured Talent Development Programmes

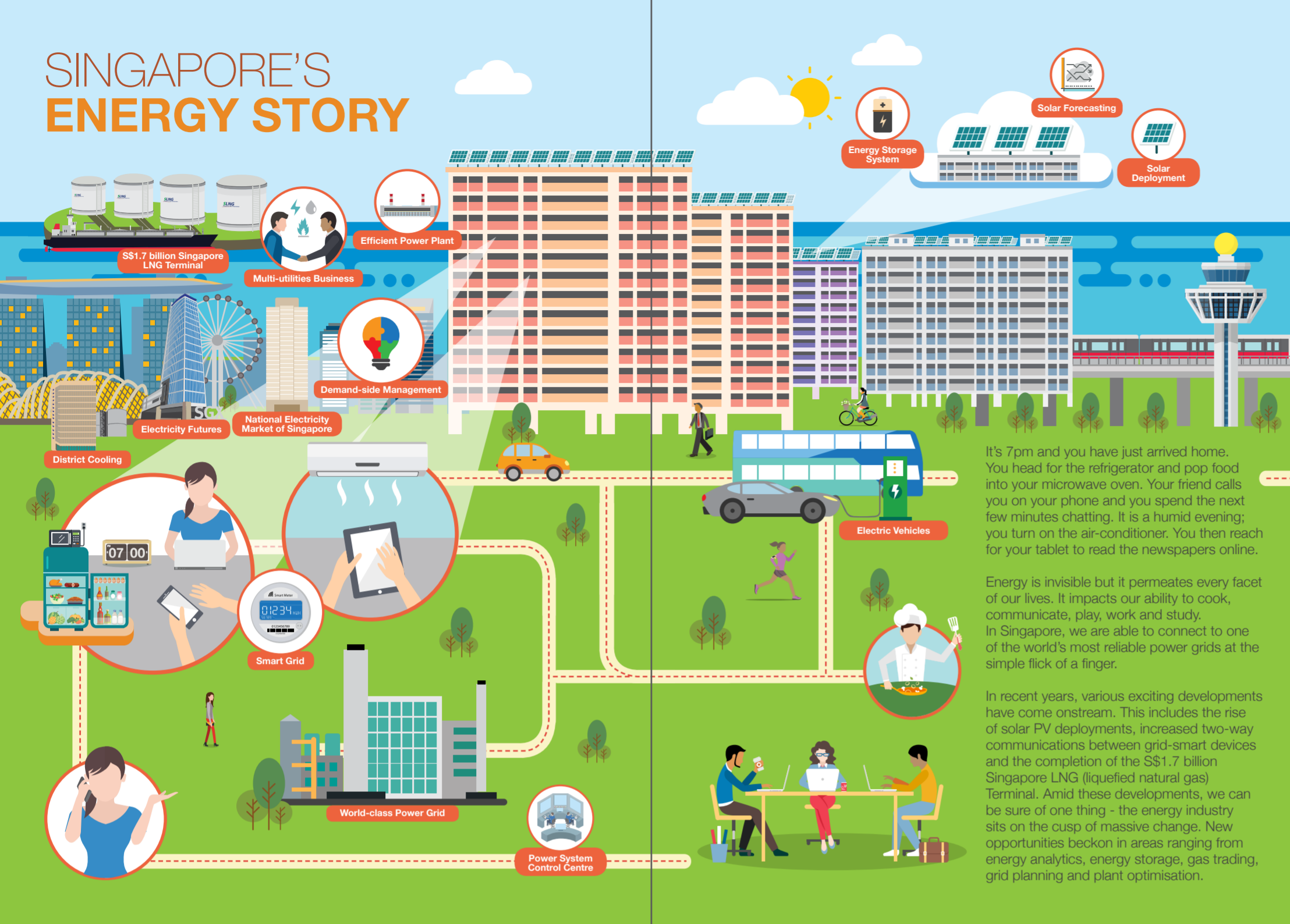
There are structured development programmes for young talents, such as Singapore Power's EDGE Programme, Singapore LNG Corporation's Graduate Development Programme and Keppel Infrastructure's Management Trainee Programme.



TOWARDS A
GREENER, SMARTER AND MORE RESILIENT POWER SYSTEM



SINGAPORE'S ENERGY STORY



It's 7pm and you have just arrived home. You head for the refrigerator and pop food into your microwave oven. Your friend calls you on your phone and you spend the next few minutes chatting. It is a humid evening; you turn on the air-conditioner. You then reach for your tablet to read the newspapers online.

Energy is invisible but it permeates every facet of our lives. It impacts our ability to cook, communicate, play, work and study. In Singapore, we are able to connect to one of the world's most reliable power grids at the simple flick of a finger.

In recent years, various exciting developments have come onstream. This includes the rise of solar PV deployments, increased two-way communications between grid-smart devices and the completion of the S\$1.7 billion Singapore LNG (liquefied natural gas) Terminal. Amid these developments, we can be sure of one thing - the energy industry sits on the cusp of massive change. New opportunities beckon in areas ranging from energy analytics, energy storage, gas trading, grid planning and plant optimisation.



CONTACT:
 991G Alexandra Road #01-29
 Singapore 119975
www.ema.gov.sg

DID YOU KNOW?

The Power sector has a **strong Singaporean core workforce.**

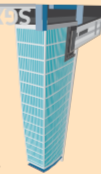


S\$1.7 billion.

The Singapore LNG Terminal was completed in seven years at a cost of



The National Electricity Market of Singapore is **Asia's first liberalised electricity market.**



Residential households contribute about **15%** of the total energy consumed in Singapore.



In Singapore, about **40%** of the electricity produced is consumed by industrial users.

